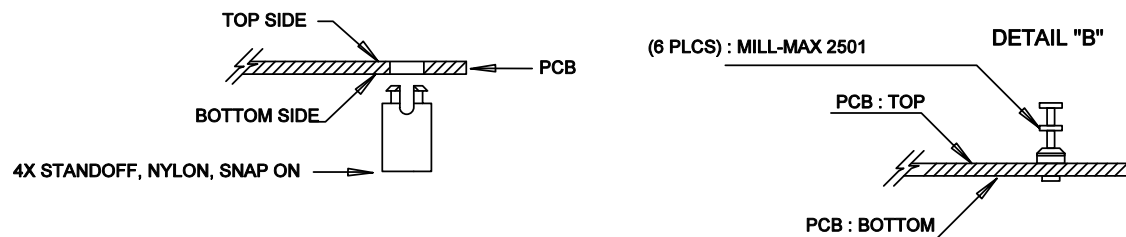
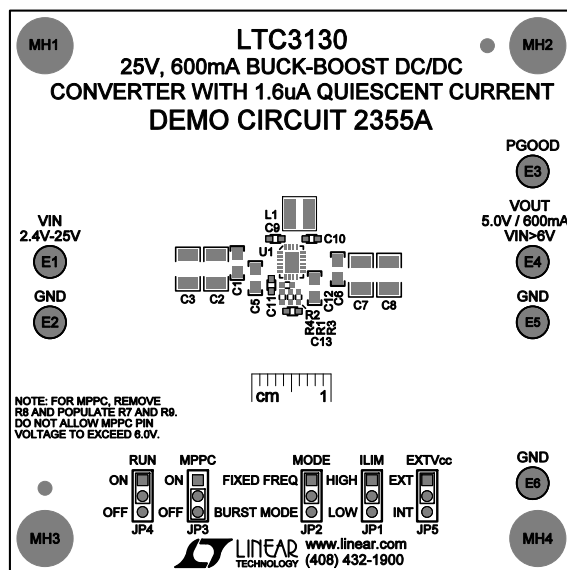



REVISION HISTORY				
ECO	REV	DESCRIPTION	APP. ENG.	DATE
-	3	PRODUCTION	JN	05-23-16

NOTES: UNLESS OTHERWISE SPECIFIED

1. WORKMANSHIP SHALL BE IN ACCORDANCE WITH IPC-A-610.
2. ASSEMBLY REFLOW PROFILE SHALL BE IN ACCORDANCE WITH J-STD-020 WITH MAXIMUM SOLDER TEMPERATURE OF 250 DEGREES CELSIUS.
3. PARTS TO OMIT WILL BE SPECIFIED ON THE BILL OF MATERIALS
LOCATIONS OF OMITTED PARTS SHALL BE FREE OF SOLDER.
MASK THE SOLDER STENCIL WHERE SMT PARTS ARE OMITTED.
4. INSTALL SHUNTS AS SHOWN ON ASSY DRAWING.
5. DEPANELIZE BOARDS AFTER ASSEMBLY AND ROUTE-OUT THE BREAKOUT TABS ON FOUR SIDES OF THE BOARD EDGE.
6. APPLY ASSEMBLY STAMP OR QA STAMP TO BOTTOM OF BOARD (UNSHOWY AREA).
7. INSTALL TURRETS, STAND-OFFS AS SHOWN BELOW:



APPROVALS		 LINEAR TECHNOLOGY 1630 MCCARTHY BLVD MILPITAS, CA 95035 PH: (408)432-1900 www.linear.com LTC CONFIDENTIAL- FOR CUSTOMER USE ONLY	
PCB DES	NC		
APP ENG	JIM N.	TITLE: TOP ASSEMBLY DRAWING 25V, 600mA BUCK-BOOST DC/DC CONVERTER WITH 1.6uA QUIESCENT CURRENT	
		SIZE	REV.
		N/A	3
SCALE = NONE		SHT 1 OF 1	